

Punching System ECO Technical Data Sheet



Design

The punching drive ECO consists of the Voith block cylinder and the directly mounted punching module. The result of this is a very compact and user-friendly design. Pipe-work is kept to a minimum as several valve components are integrated directly into the punch module. The dynamic movements using this valve technology can give an exact and precise control. Compared to other control systems, this special control design allows a reduced power requirement with increased performance.

The control card (HS2) is the electronic link between the machine control and the punch unit. Control and monitoring of the complete punch process is handled by the HS2. Electronic boosting greatly reduces the valve switching time.

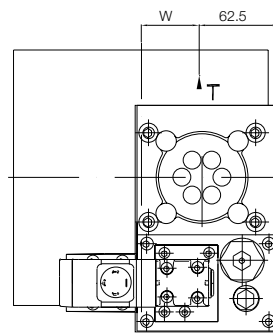
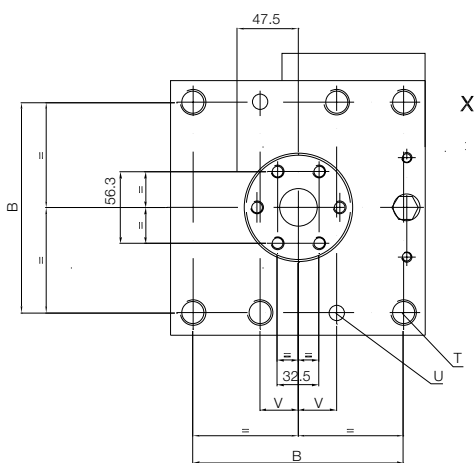
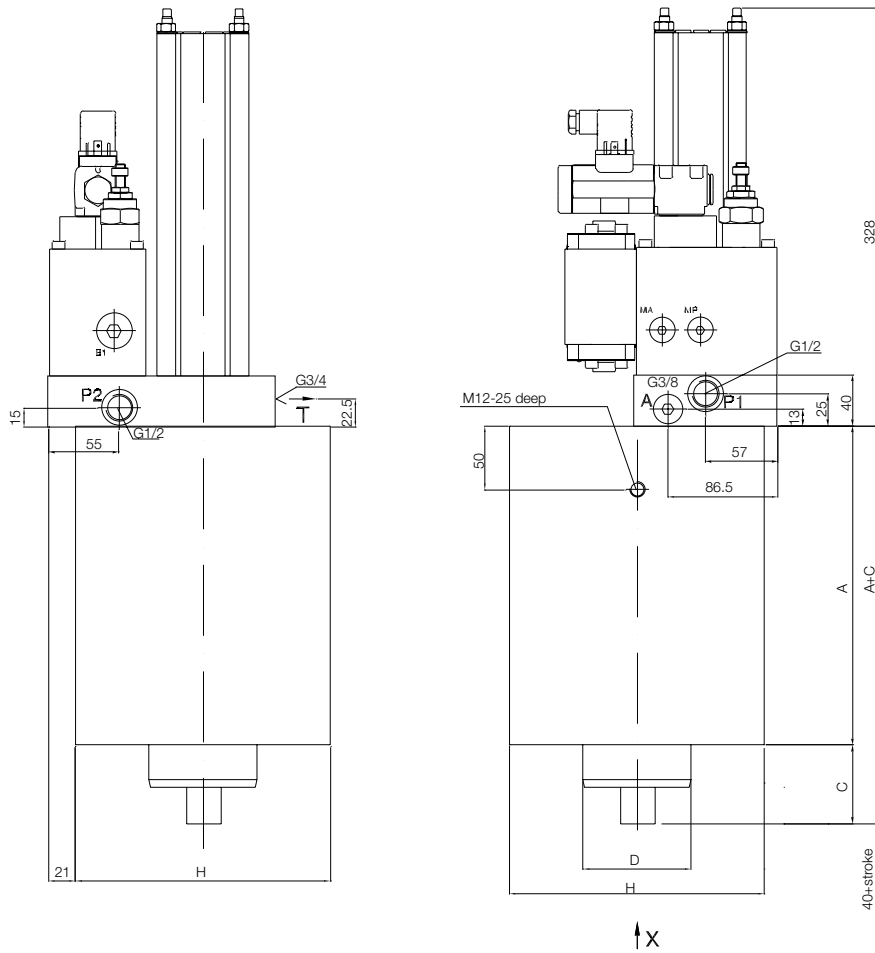
An optimised power pack will be included in our quotation.

Key Performance Figures - ECO 20to / 30to / 40to*:

	ECO 20 to	ECO 30 to	ECO 40 to
working pressure max.	280 bar	280 bar	280 bar
work force max.	220 kN	317 kN	431 kN
punching force under partial load	73 kN	108 kN	149 kN
cylinder stroke	40 mm	40 mm	40 mm
standard electric power	11 kW	11 kW	11 kW
cycle time punch stroke 6 mm	105 ms	130 ms	160 ms
cycle time punch stroke 8 mm	125 ms	160 ms	205 ms
cycle time punch stroke 10 mm	165 ms	220 ms	280 ms

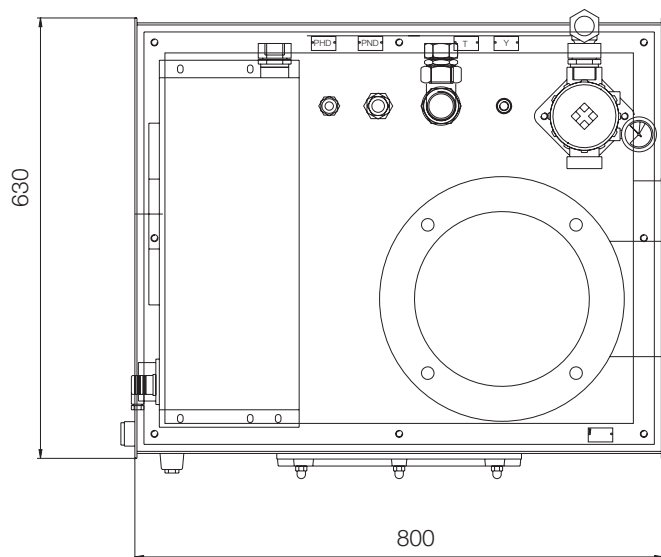
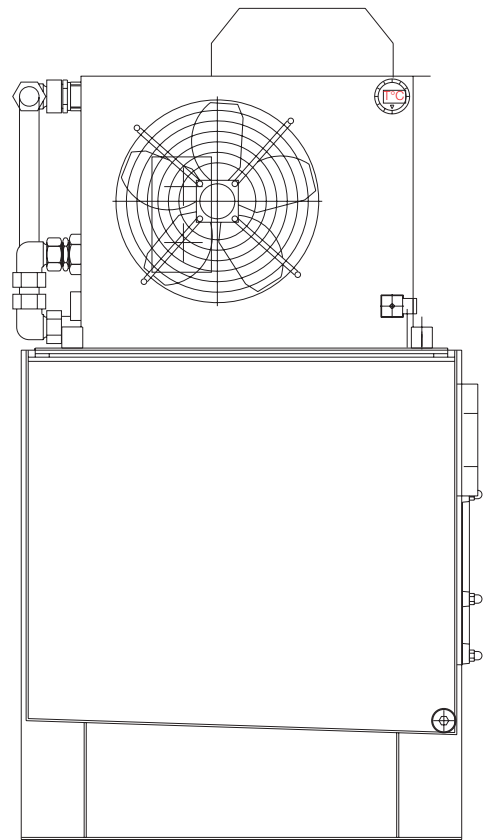
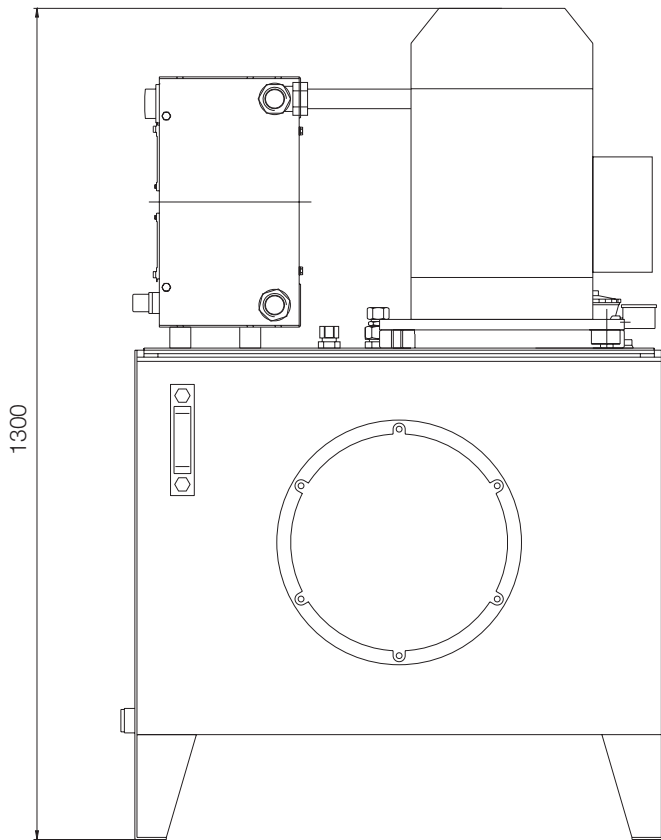
*additional data according to dimensioning protocol

Dimensional Drawing ECO



	A	B	C	D	H	T	U	V	W
ECO 20 to	240	145	62	70	180	6xM20	2xØ12	30	38
ECO 30 to	250	165	62	85	200	6xM20	2xØ12	30	48
ECO 40 to	260	170	62	100	210	8xM20	-	45	53

Dimensional Drawing Power Pack



Voith Turbo H + L Hydraulic
GmbH & Co. KG
Schuckertstraße 15
71277 Rutesheim, Germany
Tel. +49 7152 992-3
Fax +49 7152 992-400
sales-rut@voith.com
voith.com

